



Quality  
Reliability  
Benefit

STEELBO  
A company driven  
by innovation

2026



# CONTENTS

01	Knee joints	05-16
02	Hip joints	17-21
03	Prosthetic feet	22-27
04	Prosthetic liners	28-32
05	Socket lamination adapters	33-36
06	Tube adapters	36-37
07	Extension adapters	37-39
08	Connecting adapters	40-42
09	Foot adapters	42
10	Rotational adapters	43
11	Locks	43-44
12	Orthopedic textiles	44-45



## ABOUT THE COMPANY

### **Steelbo - your trusted solutions in the medical industry.**

We are a Polish manufacturing and trading company that has been delivering top-quality solutions for the medical and industrial sectors for years. Our main activity is the production of medical devices and providing services in precision CNC machining.

We are distinguished by a team of international specialists with many years of professional experience, both in executing advanced projects and in organizing workflows. We regularly participate in prestigious industry trade shows, which allows us to showcase our products and services, gain inspiration, and establish collaborations with market leaders.

Innovation, quality, and professionalism are our priorities.

---

Sincerely, the STEELBO Team!



### Modern Production of Prosthetic Components at Steelbo

At Steelbo, we believe that precision in manufacturing and reliability in performance are crucial in every field of medical engineering = especially in prosthetics. That is why we have been developing our own line of knee adapters and modules for years, based on modern technological solutions.

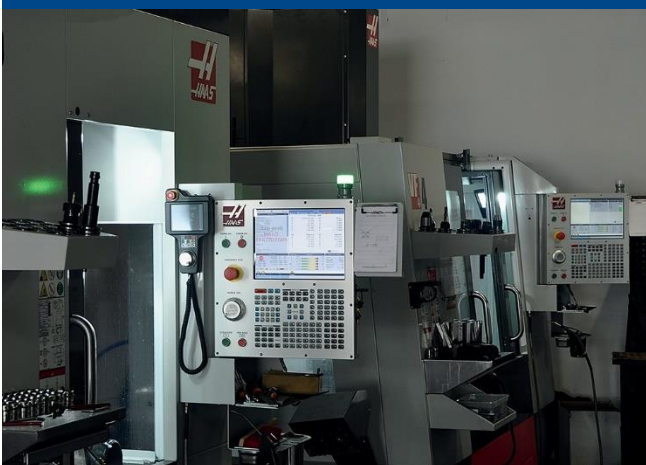
Our components are manufactured using:

- Advanced CNC machining centers that ensure high precision. Технології лазерного
- Laser marking technology, enabling permanent identification and compliance with CE requirements.
- Multi-stage quality control systems, ensuring the reliability of finished products.

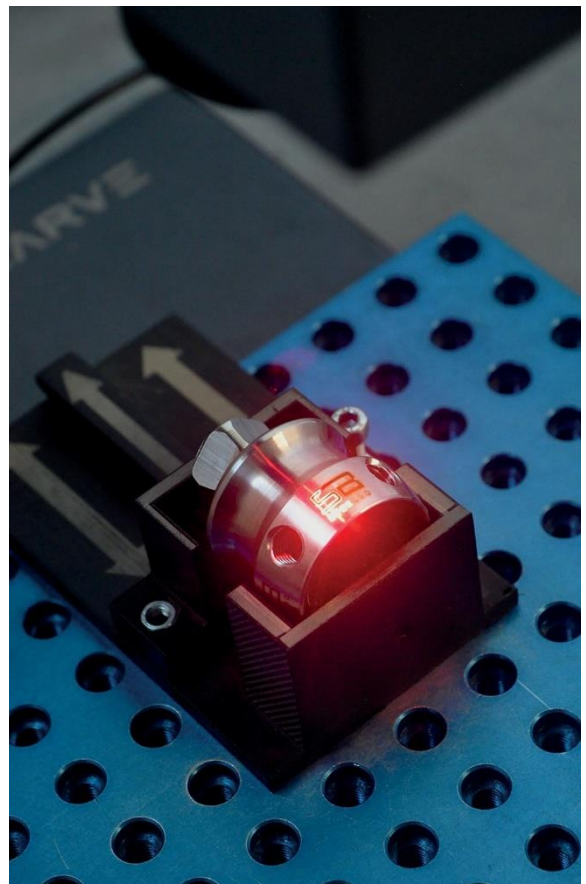
Production takes place in Poland, using certified materials and adhering to the highest European standards.

Every component leaving our factory is the result of dedication, experience, and a passion for innovation.

**Steelbo represents quality you can trust.**



We care not only about technical performance but also about the aesthetics of the finish and the functionality of the design. This ensures that our products meet the expectations of even the most demanding clients = both orthopedic specialists and end users.





## RAVEN CR

Hydraulic knee joint with geometric lock

### TECHNICAL DATA

■ Material	Aluminum/Stainless steel
■ Maximum flexion angle°	145
■ Knee joint type	Hydraulic
■ Mobility level	2-3
■ Product weight [kg]	0,856
■ Maximum user weight [kg]	125



3-Year  
Warranty



## EAGLE MK

Hydraulic knee joint with braking lock

### TECHNICAL DATA

■ Material	Aluminum / Titanium / Stainless steel
■ Maximum flexion angle°	135
■ Knee joint type	Hydraulic
■ Mobility level	2-4
■ Product weight [kg]	1,1
■ Maximum user weight [kg]	100



3-Year  
Warranty



## M1.ZZ

### Mechanical waterproof knee joint with lock

#### TECHNICAL DATA

■ Material	Aluminum/Stainless steel
■ Maximum flexion angle°	140
■ Knee joint type	Mechanical
■ Mobility level	1-2
■ Product weight [kg]	0,291
■ Maximum user weight [kg]	125



Waterproof



3-Year  
Warranty



# M10.ZZ

Mechanical waterproof knee joint with lock

### TECHNICAL DATA

■ Material	Aluminum/Stainless steel
■ Maximum flexion angle°	140
■ Knee joint type	Mechanical
■ Mobility level	1-2
■ Product weight [kg]	0,310
■ Maximum user weight [kg]	125





# M4.BZ

## Mechanical waterproof knee joint

### TECHNICAL DATA

■ Material	Aluminum/Stainless steel
■ Maximum flexion angle°	150
■ Knee joint type	Mechanical
■ Mobility level	1-3
■ Product weight [kg]	0,558
■ Maximum user weight [kg]	125





# M4.ZZ

## Mechanical waterproof knee joint with lock

### TECHNICAL DATA

■ Material	Aluminum/Stainless steel
■ Maximum flexion angle°	150
■ Knee joint type	Mechanical
■ Mobility level	1-3
■ Product weight [kg]	0,588
■ Maximum user weight [kg]	125





## P5.KM

Pneumatic knee joint with geometric lock

### TECHNICAL DATA

■ Material	Aluminum alloy/ Stainless steel
■ Maximum flexion angle°	135
■ Knee joint type	Mechanical
■ Mobility level	2-3
■ Product weight [kg]	0,950
■ Maximum user weight [kg]	125





## P4.PQ

### Pneumatic knee joint

#### TECHNICAL DATA

■ Material	Aluminum alloy/ Stainless steel
■ Maximum flexion angle°	140
■ Knee joint type	Pneumatic
■ Mobility level	2-3
■ Product weight [kg]	0,823
■ Maximum user weight [kg]	125



3-Year  
Warranty



## PR04HD.S03

Hydraulic knee joint with friction lock

### TECHNICAL DATA

■ Material	Aluminum
■ Maximum flexion angle°	135
■ Knee joint type	Hydraulic
■ Mobility level	3
■ Product weight [kg]	1,003
■ Maximum user weight [kg]	100



2-Year  
Warranty



## PR04.PO.M02

### Polycentric pneumatic knee joint

#### TECHNICAL DATA

■ Material	Aluminum
■ Maximum flexion angle°	145
■ Mobility level	3
■ Proximal connection	Pyramid Adapter
■ Distal connection	Tube Adapter
■ System Height [mm]	153
■ Product weight [kg]	0,640
■ Maximum user weight [kg]	100



2-Year  
Warranty



## C-TK-4000S

### Mechanical knee joint

#### TECHNICAL DATA

■ Material	Aluminum
■ Maximum flexion angle°	135
■ Joint type	Polycentric
■ Mobility level	1-2
■ Product weight [kg]	0,835
■ Maximum user weight [kg]	125



2-Year  
Warranty



## C-TK-4001S

Mechanical knee joint with lock

### TECHNICAL DATA

■ Material	Aluminum
■ Maximum flexion angle°	120
■ Knee joint type	Polycentric
■ Mobility level	1-2
■ Product weight [kg]	0,880
■ Maximum user weight [kg]	125



2-Year  
Warranty



## C-TK-4P00S

Pneumatic knee joint with four-bar linkage mechanism

### TECHNICAL DATA

■ Material	Metal Alloy
■ Maximum flexion angle°	140
■ Knee joint type	Pneumatic
■ Mobility level	2-3
■ Product weight [kg]	1,250
■ Maximum user weight [kg]	100



2-Year  
Warranty



# C-RAY-RP1

Rayome pneumatic knee joint with four-bar linkage

## TECHNICAL DATA

■ Material	Aluminum, Titanium Alloy
■ Maximum flexion angle°	159
■ Knee joint type	Pneumatic
■ Mobility level	2-3
■ Product weight [kg]	1,146
■ Maximum user weight [kg]	125





## SBM-1

### Mechanical hip joint

#### TECHNICAL DATA

■ Material	Aluminum
■ Maximum flexion angle°	115
■ Joint type	Polycentric
■ Mobility level	2-3
■ Build height [mm]	192
■ Product weight [kg]	0,820
■ Maximum user weight [kg]	100



3-Year  
Warranty



## PR04.K7

### Hydraulic hip joint

#### TECHNICAL DATA

■ Main body material	Aluminum alloy
■ Maximum flexion angle°	140
■ Joint type	Monocentric
■ Mobility level	2-3
■ Build height [mm]	130
■ Product weight [kg]	0,750
■ Maximum user weight [kg]	125



2-Year  
Warranty



## A-TGH-01

### Mechanical hip joint

#### TECHNICAL DATA

■ Material	Carbon fiber
■ Maximum flexion angle°	115
■ Joint type	Monocentric
■ Mobility level	2-3
■ Build height [mm]	250
■ Product weight [kg]	0,600
■ Maximum user weight [kg]	100

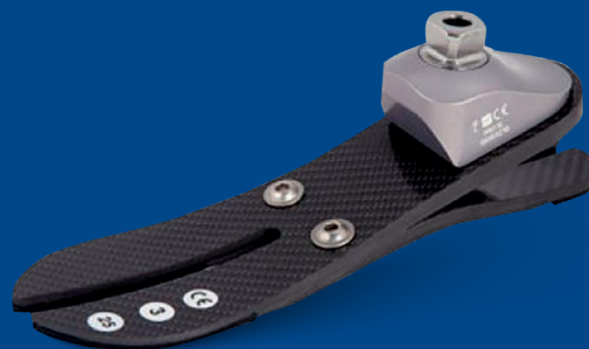


2-Year  
Warranty



## PR01.K5.ASYA

Carbon fiber prosthetic foot  
ASYA



## PR01.KL.LARA

Carbon fiber prosthetic foot LARA

### TECHNICAL DATA

- Maximum user weight [kg]
- Sizes [cm]
- Available
- Mobility level

Up to 125  
22-30  
Left/right  
3-4



2-Year Warranty



Name	SIZE	Side
PR01.K5.22L	22	(L) Left
PR01.K5.22R	22	(R) Right
PR01.K5.23L	23	(L) Left
PR01.K5.23R	23	(R) Right
PR01.K5.24L	24	(L) Left
PR01.K5.24R	24	(R) Right
PR01.K5.25L	25	(L) Left
PR01.K5.25R	25	(R) Right
PR01.K5.26L	26	(L) Left
PR01.K5.26R	26	(R) Right
PR01.K5.27L	27	(L) Left
PR01.K5.27R	27	(R) Right
PR01.K5.28L	28	(L) Left
PR01.5L.28R	28	(R) Right
PR01.K5.29L	29	(L) Left
PR01.K5.29R	29	(R) Right
PR01.K5.30L	30	(L) Left
PR01.K5.30R	30	(R) Right

Name	SIZE	Side
PR01.KL.22L	22	(L) Left
PR01.KL.22R	22	(R) Right
PR01.KL.23L	23	(L) Left
PR01.KL.23R	23	(R) Right
PR01.KL.24L	24	(L) Left
PR01.KL.24R	24	(R) Right
PR01.KL.25L	25	(L) Left
PR01.KL.25R	25	(R) Right
PR01.KL.26L	26	(L) Left
PR01.KL.26R	26	(R) Right
PR01.KL.27L	27	(L) Left
PR01.KL.27R	27	(R) Right
PR01.KL.28L	28	(L) Left
PR01.KL.28R	28	(R) Right
PR01.KL.29L	29	(L) Left
PR01.KL.29R	29	(R) Right
PR01.KL.30L	30	(L) Left
PR01.KL.30R	30	(R) Right



# SPORTS

## TECHNICAL DATA

■ Material	Carbon fiber	
■ Sizes	-	
■ Categories	8	
■ Build height [mm]	280	 Waterproof
■ Weight (size 26) [g]	645	
■ Resistance	Freshwater and saltwater	 2-Year Warranty
■ Maximum user weight [kg]	120	
■ Activity level / Intended use	Recreational and general sports use	

Reference number

**SP-280-S-1-AR**

Model

Build height [mm]

Category

See next page

Connection type

G: Bonded sole

S: Screw-mounted sole



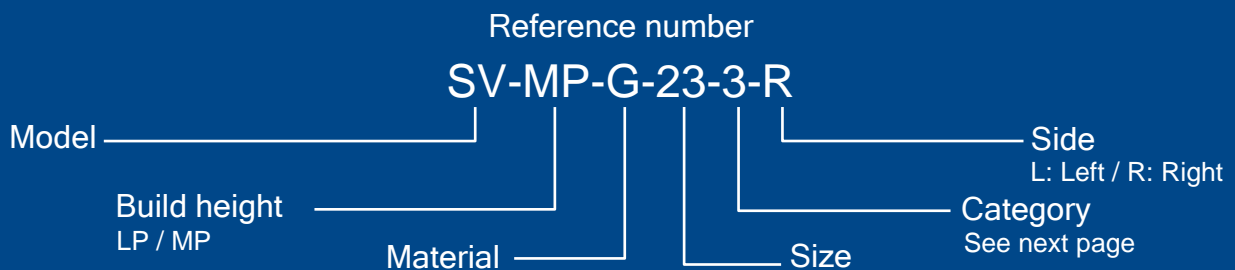
# VISION MP

## TECHNICAL DATA

■ Material	Colored fiberglass	
■ Sizes	23-29	
■ Categories	5	
■ Build height [mm]	98	
■ Weight (size 26) [g]	397	
■ Resistance	Freshwater and saltwater	
■ Maximum user weight [kg]	160	
■ Activity level / Intended use	1-2	

Waterproof

2-Year  
Warranty



G: Fiberglass / C: Carbon



# VISION LP

## TECHNICAL DATA

■ Material	Carbon	
■ Sizes	23-29	
■ Categories	5	
■ Build height [mm]	62	
■ Weight (size 26) [g]	292	
■ Resistance	Freshwater and saltwater	
■ Maximum user weight [kg]	125	
■ Activity level / Intended use	2-3	2-Year Warranty

Reference number

**SV-LP-C-23-3-R**

Model

Build height  
LP / MP

Material

Size

Side

L: Left / R: Right

Category

See next page

G: Fiberglass / C: Carbon



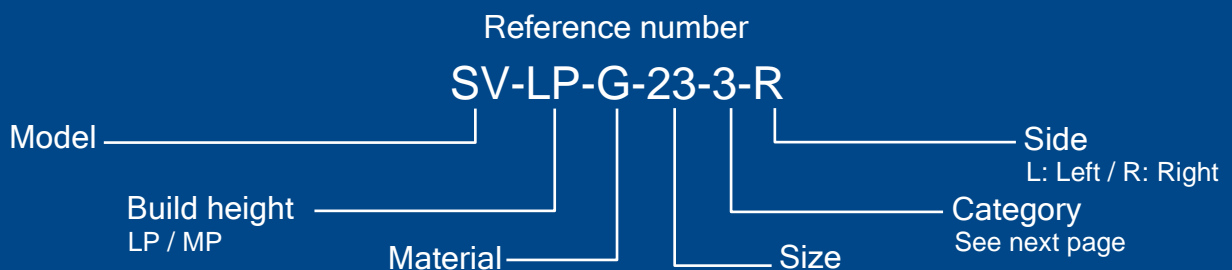
# VISION LP

## TECHNICAL DATA

■ Material	Fiberglass	
■ Sizes	23-29	
■ Categories	5	
■ Build height [mm]	62	
■ Weight (size 26) [g]	330	
■ Resistance	Freshwater and saltwater	
■ Maximum user weight [kg]	140	
■ Activity level / Intended use	1-3	

Waterproof

2-Year Warranty



G: Fiberglass / C: Carbon



SPORTS

User weight	Experience level	
	Low	High
40-50 kg	Category 1	Category 2
51-60 kg	Category 2	Category 3
61-70 kg	Category 3	Category 4
71-80 kg	Category 4	Category 5
81-90 kg	Category 5	Category 6
91-100 kg	Category 6	Category 7
101-110 kg	Category 7	Category 8
111-120 kg	Category 8	N/A

VISION MP

User weight	50-70kg	71-91 kg	92-112 kg	113-133 kg	134-160 kg
Size 23					
Size 24					
Size 25					
Size 26					
Size 27					
Size 28					
Size 29					
<b>Category</b>	<b>1</b>	<b>2</b>	<b>3</b>	<b>4</b>	<b>5</b>



VISION LP

User weight	48-59 kg	60-72 kg	73-87 kg	88-103 kg	104-125 kg
Size 23					
Size 24					
Size 25					
Size 26					
Size 27					
Size 28					
Size 29					
<b>Category</b>	<b>1</b>	<b>2</b>	<b>3</b>	<b>4</b>	<b>5</b>

VISION LP

User weight	50-65 kg	66-82 kg	83-99 kg	100-118 kg	119-140 kg
Size 23					
Size 24					
Size 25					
Size 26					
Size 27					
Size 28					
Size 29					
<b>Category</b>	<b>1</b>	<b>2</b>	<b>3</b>	<b>4</b>	<b>5</b>



  
6-Month  
Warranty

## COMFORT SIL LOCKING

Silicone locking liner

3 mm / with pin connection

Reference number	Size
120-CL-1-330-16	160 mm
120-CL-1-330-18	180 mm
120-CL-1-330-20	200 mm
120-CL-1-330-21	210 mm
120-CL-1-330-22	220 mm
120-CL-1-330-23.5	235 mm
120-CL-1-330-25	250 mm
120-CL-1-330-26.5	265 mm
120-CL-1-330-28	280 mm
120-CL-1-330-30	300 mm
120-CL-1-330-32	320 mm
120-CL-1-330-34	340 mm
120-CL-1-330-36	360 mm
120-CL-1-330-38	380 mm
120-CL-1-330-40	400 mm
120-CL-1-330-42	420 mm
120-CL-1-330-45	450 mm



  
6-Month  
Warranty

## COMFORT SIL CUSHION

Silicone cushion liner

3 mm / without distal attachment

Reference number	Size
120-CC-1-330-16	160 mm
120-CC-1-330-18	180 mm
120-CC-1-330-20	200 mm
120-CC-1-330-21	210 mm
120-CC-1-330-22	220 mm
120-CC-1-330-23.5	235 mm
120-CC-1-330-25	250 mm
120-CC-1-330-26.5	265 mm
120-CC-1-330-28	280 mm
120-CC-1-330-30	300 mm
120-CC-1-330-32	320 mm
120-CC-1-330-34	340 mm
120-CC-1-330-36	360 mm
120-CC-1-330-38	380 mm
120-CC-1-330-40	400 mm
120-CC-1-330-42	420 mm
120-CC-1-330-45	450 mm



  
6-Month  
Warranty

## COMFORT SIL TF

Silicone locking liner TF

Special thigh padding

Reference number	Size
120-CTF-1-240-25	250 mm
120-CTF-1-240-26,5	265 mm
120-CTF-1-240-28	280 mm
120-CTF-1-240-30	300 mm
120-CTF-1-240-32	320 mm
120-CTF-1-240-34	340 mm
120-CTF-1-240-36	360 mm
120-CTF-1-240-38	380 mm
120-CTF-1-240-40	400 mm
120-CTF-1-240-42	420 mm
120-CTF-1-240-45	450 mm
120-CTF-1-240-50	500 mm
120-CTF-1-240-55	550 mm



## COMFORT SIL LOCKING

Silicone locking liner

6 mm / with distal pin attachment

Reference number	Size
120-CL-1-630-16	160 mm
120-CL-1-630-18	180 mm
120-CL-1-630-20	200 mm
120-CL-1-630-21	210 mm
120-CL-1-630-22	220 mm
120-CL-1-630-23.5	235 mm
120-CL-1-630-25	250 mm
120-CL-1-630-26.5	265 mm
120-CL-1-630-28	280 mm
120-CL-1-630-30	300 mm
120-CL-1-630-32	320 mm
120-CL-1-630-34	340 mm
120-CL-1-630-36	360 mm
120-CL-1-630-38	380 mm
120-CL-1-630-40	400 mm
120-CL-1-630-42	420 mm
120-CL-1-630-45	450 mm

## COMFORT SIL CUSHION

Silicone cushion liner

6 mm / without distal attachment

Reference number	Size
120-CC-1-630-16	160 mm
120-CC-1-630-18	180 mm
120-CC-1-630-20	200 mm
120-CC-1-630-21	210 mm
120-CC-1-630-22	220 mm
120-CC-1-630-23.5	235 mm
120-CC-1-630-25	250 mm
120-CC-1-630-26.5	265 mm
120-CC-1-630-28	280 mm
120-CC-1-630-30	300 mm
120-CC-1-630-32	320 mm
120-CC-1-630-34	340 mm
120-CC-1-630-36	360 mm
120-CC-1-630-38	380 mm
120-CC-1-630-40	400 mm
120-CC-1-630-42	420 mm
120-CC-1-630-45	450 mm

## UNIVERSAL SIL LOCKING

Silicone locking liner

3 mm / with pin connector

Reference number	Size
120-UL-1-340-16	160 mm
120-UL-1-340-18	180 mm
120-UL-1-340-20	200 mm
120-UL-1-340-21	210 mm
120-UL-1-340-22	220 mm
120-UL-1-340-23.5	235 mm
120-UL-1-340-25	250 mm
120-UL-1-340-26.5	265 mm
120-UL-1-340-28	280 mm
120-UL-1-340-30	300 mm
120-UL-1-340-32	320 mm
120-UL-1-340-34	340 mm
120-UL-1-340-36	360 mm
120-UL-1-340-38	380 mm
120-UL-1-340-40	400 mm
120-UL-1-340-42	420 mm
120-UL-1-340-45	450 mm



6-Month  
Warranty

## UNIVERSAL SIL CUSHION

Silicone cushion liner

3mm / without  
distal attachment

Reference number	Size
120-UC-1-340-16	160 mm
120-UC-1-340-18	180 mm
120-UC-1-340-20	200 mm
120-UC-1-340-21	210 mm
120-UC-1-340-22	220 mm
120-UC-1-340-23.5	235 mm
120-UC-1-340-25	250 mm
120-UC-1-340-26.5	265 mm
120-UC-1-340-28	280 mm
120-UC-1-340-30	300 mm
120-UC-1-340-32	320 mm
120-UC-1-340-34	340 mm
120-UC-1-340-36	360 mm
120-UC-1-340-38	380 mm
120-UC-1-340-40	400mm
120-UC-1-340-42	420 mm
120-UC-1-340-45	450 mm



6-Month  
Warranty

## COMFORT GEL LOCKING

Gel locking liner

Mi pin connector

Reference number	Size
<b>Wall thickness 3 mm</b>	
12 5-CL-1-330-S	S
12 5-CL-1-330-M	M
12 5-CL-1-330-L	L
12 5-CL-1-330-XL	XL
12 5-CL-1-330-XXL	XXL
<b>Wall thickness 6 mm</b>	
12 5-CL-1-6 30-S	S
12 5-CL-1-6 30-M	M
12 5-CL-1-6 30-L	L
12 5-CL-1-6 30-XL	XL
12 5-CL-1-6 30-XXL	XXL
<b>Wall thickness 9 mm</b>	
12 5-CL-1-9 30-S	S
12 5-CL-1-9 30-M	M
12 5-CL-1-9 30-L	L
12 5-CL-1-9 30-XL	XL
12 5-CL-1-9 30-XXL	XXL



6-Month  
Warranty

## COMFORT GEL CUSHION

Gel cushion liner

without distal  
attachment

Reference number	Size
<b>Wall thickness 3 mm</b>	
12 5-CC-1-330-S	S
12 5-CC-1-330-M	M
12 5-CC-1-330-L	L
12 5-CC-1-330-XL	XL
12 5-CC-1-330-XXL	XXL
<b>Wall thickness 6 mm</b>	
12 5-CC-1-6 30-S	S
12 5-CC-1-6 30-M	M
12 5-CC-1-6 30-L	L
12 5-CC-1-6 30-XL	XL
12 5-CC-1-6 30-XXL	XXL
<b>Wall thickness 9 mm</b>	
12 5-CC-1-9 30-S	S
12 5-CC-1-9 30-M	M
12 5-CC-1-9 30-L	L
12 5-CC-1-9 30-XL	XL
12 5-CC-1-9 30-XXL	XXL



6-Month  
Warranty



6-Month  
Warranty

## PR30 FC

Silicone locking liner

Reference number	Size
<b>Wall thickness 3 mm</b>	
PR30.FC.314	140 mm
PR30.FC.316	160 mm
PR30.FC.318	180 mm
PR30.FC.320	200 mm
PR30.FC.322	220 mm
PR30.FC.323	235 mm
PR30.FC.325	250 mm
PR30.FC.326	265 mm
PR30.FC.328	280 mm
PR30.FC.330	300 mm
PR30.FC.332	320 mm
PR30.FC.334	340 mm
PR30.FC.336	360 mm
PR30.FC.338	380 mm
PR30.FC.340	400 mm
PR30.FC.342	420 mm
PR30.FC.345	450 mm
PR30.FC.347	470 mm
PR30.FC.352	520 mm

## PR30 FC

Silicone locking liner

Order number	Size
<b>Wall thickness 6 mm</b>	
PR30.FC.618	180 mm
PR30.FC.620	200 mm
PR30.FC.622	220 mm
PR30.FC.625	235 mm
PR30.FC.626	265 mm
PR30.FC.628	280 mm
PR30.FC.630	300 mm
PR30.FC.632	320 mm
PR30.FC.634	340 mm
PR30.FC.636	360 mm
PR30.FC.638	380 mm
PR30.FC.640	400 mm
PR30.FC.642	420 mm
PR30.FC.645	450 mm
PR30.FC.647	470 mm
PR30.FC.652	520 mm



6-Month  
Warranty

## PR30 FD

Silicone cushion liner

Reference number	Size
<b>Wall thickness 6 mm</b>	
PR30.FD.618	180 mm
PR30.FD.620	200 mm
PR30.FD.622	220 mm
PR30.FD.625	235 mm
PR30.FD.626	265 mm
PR30.FD.628	280 mm
PR30.FD.630	300 mm
PR30.FD.632	320 mm
PR30.FD.634	340 mm
PR30.FD.636	360 mm
PR30.FD.638	380 mm
PR30.FD.640	400 mm
PR30.FD.642	420 mm
PR30.FD.645	450 mm
PR30.FD.647	470 mm
PR30.FC.652	520 mm



6-Month  
Warranty

## PR30 FD

Silicone cushion liner

Order number	Size
<b>Wall thickness 3 mm</b>	
PR30.FD.314	140 mm
PR30.FD.316	160 mm
PR30.FD.318	180 mm
PR30.FD.320	200 mm
PR30.FD.322	220 mm
PR30.FD.323	235 mm
PR30.FC.325	250 mm
PR30.FD.326	265 mm
PR30.FD.328	280 mm
PR30.FD.330	300 mm
PR30.FD.332	320 mm
PR30.FD.334	340 mm
PR30.FD.336	360 mm
PR30.FD.338	380 mm
PR30.FD.340	400 mm
PR30.FD.342	420 mm
PR30.FD.345	450 mm
PR30.FD.347	470 mm
PR30.FD.352	520 mm



## AB-3CR

Socket lamination adapter with rotational adjustment

3-Year Warranty

Product, type, model	Material	Width [mm]	Height [mm]	Product weight [kg]	Maximum user weight[kg]
AB-3CR (SS)	Stainless steel	62	24	0,150	125
AB-3CR (TI)	Titanium	52	26	0,095	125



## AB-3PR

Socket lamination adapter with rotational adjustment

3-Year Warranty

Product, type, model	Material	Width [mm]	Height [mm]	Product weight [kg]	Maximum user weight[kg]
AB-3PR (SS)	Stainless steel	62	28	0,140	125
AB-3PR (TI)	Titanium	52	32	0,089	125



## ABPC-1

Adjustable sliding base adapter with rotation

3-Year Warranty

Product, type, model	Material	Width [mm]	Height [mm]	Product weight [kg]	Maximum user weight[kg]
ABPC-1 (SS)	Stainless steel	66,5	35	0,324	125



## ABM-1

Offset base adapter

3-Year Warranty

Product, type, model	MATERIAL	Width [mm]	Height [mm]	Product weight [kg]	Maximum user weight[kg]
ABM-1 (SS)	Stainless steel	50	30	0,121	125



## AB-1C

Socket lamination adapter with female connector

3-Year Warranty

Product, type, model	Material	Width [mm]	Height [mm]	Product weight [kg]	Maximum user weight[kg]
AB-1C (SS)	Stainless steel	67	17	0,129	125
AB-1C (TI)	Titanium	67	17	0,077	125



## AB-2P

Socket lamination adapter with male connector

3-Year Warranty

Product, type, model	Material	Width [mm]	Height [mm]	Product weight [kg]	Maximum user weight[kg]
AB-2P (SS)	Stainless steel	52	22	0,086	125
AB-2P (TI)	Titanium	52	22	0,050	125



**AB-2C**  
Socket lamination adapter

3-Year Warranty

Product, type, model	Material	Width [mm]	Height [mm]	Product weight [kg]	Maximum user weight[kg]
AB-2C (AL)	Aluminum	53	18	0,059	125
AB-2C (TI)	Titanium	52	15	0,058	125



**TK-1**  
Temporary socket lamination adapter

Waterproof 3-Year Warranty

Product, type, model	Material	Width [mm]	Height [mm]	Product weight [kg]	Maximum user weight[kg]
TK-1	Aluminum	74	45	0,245	125



**TK-2**  
Temporary socket lamination adapter

Waterproof 3-Year Warranty

Product, type, model	Material	Width [mm]	Height [mm]	Product weight [kg]	Maximum user weight[kg]
TK-2	Aluminum	62	50	0,165	125



**AB-CL**  
Socket lamination adapter with female connector

3-Year Warranty

Product, type, model	Material	Width [mm]	Height [mm]	Product weight [kg]	Maximum user weight[kg]
AB-CL (AL)	Aluminum	55	25	0,105	125
AB-CL (TI)	Titanium	55	25	0,156	125



**SPIDER SC**  
Socket lamination adapter with female connector

3-Year Warranty

Product, type, model	Material	Width [mm]	Height [mm]	Product weight [kg]	Maximum user weight[kg]
SPIDERSC (SS)	Stainless steel	79	40	0,153	125



**SPIDER SP**  
Socket lamination adapter with male connector

3-Year Warranty

Product, type, model	Material	Width [mm]	Height [mm]	Product weight [kg]	Maximum user weight[kg]
SPIDERSP (SS)	Stainless steel	79	44	0,152	125



### SPIDER LC

Socket lamination adapter with female connector

3-Year Warranty

Product, type, model	Material	Width [mm]	Height [mm]	Product weight [kg]	Maximum user weight[kg]
SPIDER LC (SS)	Stainless steel	124	55	0,227	125
SPIDER LC (TI)	Titanium	112	50	0,158	125



### SPIDER LP

Socket lamination adapter with male connector

3-Year Warranty

Product, type, model	Material	Width [mm]	Height [mm]	Product weight [kg]	Maximum user weight[kg]
SPIDER LP (SS)	Stainless steel	124	60	0,215	125
SPIDER LP (TI)	Titanium	112	60	0,150	125



### SPIDER KC

Socket lamination adapter with female connector

3-Year Warranty

Product, type, model	Material	Width [mm]	Height [mm]	Product weight [kg]	Maximum user weight[kg]
SPIDER KC (SS)	Stainless steel	55	26	0,099	125
SPIDER KC(TI)	Titanium	55	26	0,062	125



### SPIDER KP

Socket lamination adapter with male connector

3-Year Warranty

Product, type, model	Material	Width [mm]	Height [mm]	Product weight [kg]	Maximum user weight[kg]
SPIDER KP (SS)	Stainless steel	55	31	0,120	125
SPIDER KP (TI)	Titanium	55	31	0,081	125
SPIDER KP (AL)	Aluminum	64	30	0,063	125



### SPIDER KCR

Adjustable rotational socket lamination adapter with female connector

3-Year Warranty

Product, type, model	Material	Width [mm]	Height [mm]	Product weight [kg]	Maximum user weight[kg]
SPIDERKCR(SS)	Stainless steel	63	35	0,168	125
SPIDER KCR (TI)	Titanium	63	35	0,097	125



### SPIDER KPR

Adjustable rotational socket lamination adapter with male connector

3-Year Warranty

Product, type, model	Material	Width [mm]	Height [mm]	Product weight [kg]	Maximum user weight[kg]
SPIDERKPR(SS)	Carbon Steel / Stainless steel	63	42	0,155	125
SPIDER KPR (TI)	Titanium	63	42	0,085	125



## SPIDER KCR/W

Adjustable rotational socket lamination adapter



Product, type, model	Material	Width [mm]	Height [mm]	Product weight [kg]	Maximum user weight[kg]
SPIDER KCR/W45 (TI)	Titanium	64	45	0,125	125
SPIDER KCR/W55 (TI)	Titanium	64	55	0,133	125
SPIDER KCR/W70 (TI)	Titanium	64	70	0,150	125

## 06 TUBE ADAPTERS



### AR200/AR400

Tube extension adapter 200/400mm



Product, type, model	Material	Width [mm]	Height [mm]	Product weight [kg]	Maximum user weight[kg]
AR200 (SS)	Stainless steel	40	202	0,208	125
AR400 (SS)	Stainless steel	40	402	0,316	125



### ARW200/ARW400

Carbon fiber tube adapter 200/400mm

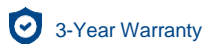


ВІРІБ, ТИП, МОДЕЛЬ	Material	Width [mm]	Height [mm]	Product weight [kg]	Maximum user weight[kg]
ARW200 (TI)	Titanium	40	202	0,148	125
ARW400 (TI)	Titanium	40	402	0,216	125
ARW200 (AL)	Aluminum	44	220	0,146	125
ARW400 (AL)	Aluminum	44	420	0,191	125



### RW200/RW400

Carbon fiber tube 200/400mm



Product, type, model	Material	Width [mm]	Height [mm]	Product weight [kg]	Maximum user weight[kg]
RW200	Carbon Fiber	30	200	0,065	125
RW400	Carbon Fiber	30	400	0,128	125



### ARA200/ARA400

Tube adapter 200/400mm



Product, type, model	Material	Width [mm]	Height [mm]	Product weight [kg]	Maximum user weight[kg]
ARA200 (AL)	Aluminum	44	220	0,210	125
ARA400 (AL)	Aluminum	44	420	0,275	125



### ARW-1 200/ARW-1 400

Tube adapter 200/400mm

3-Year Warranty

Product, type, model	Material	Width [mm]	Height [mm]	Product weight [kg]	Maximum user weight[kg]
ARW-1 200 (TI)	Titanium	39	220	0,169	125
ARW-1 400 (TI)	Titanium	39	420	0,229	125

### AR-1 200/AR-1 400

Tube adapter 200/400mm

3-Year Warranty

Product, type, model	Material	Width [mm]	Height [mm]	Product weight [kg]	Maximum user weight[kg]
AR-1 200 (SS)	Stainless steel	39	220	0,207	125
AR-1 400 (SS)	Stainless steel	39	420	0,304	125

### ARP-1

Trial tube adapter

3-Year Warranty

Product, type, model	Material	Width [mm]	Height [mm]	Product weight [kg]	Maximum user weight[kg]
ARP-1 (SS)	Stainless steel	40	290-420	0,330	125

## 07 EXTENSION ADAPTERS



### APP-1

Offset extension adapter

3-Year Warranty

Product, type, model	Material	Width [mm]	Height [mm]	Product weight [kg]	Maximum user weight[kg]
APP-1 (AL)	Aluminum	42	75	0,101	125



### APP-2

Offset extension adapter

3-Year Warranty

Product, type, model	Material	Width [mm]	Height [mm]	Product weight [kg]	Maximum user weight[kg]
APP-2 (AL)	Aluminum	42	200	0,193	125



### DA-PP32

Extension adapter

3-Year Warranty

Product, type, model	Material	Width [mm]	Height [mm]	Product weight [kg]	Maximum user weight[kg]
DA-PP32(SS)	Stainless steel	38	32	0,098	125



### APW-1

Extension adapter



Product, type, model	Material	Width [mm]	Height [mm]	Product weight [kg]	Maximum user weight[kg]
APW-1 (SS)	Stainless steel	38	60-75	0,246	125
APW-1 (TI)	Titanium	38	65-75	0,145	125



### APW-2

Extension adapter



Product, type, model	Material	Width [mm]	Height [mm]	Product weight [kg]	Maximum user weight[kg]
APW-2 (TI)	Titanium	43	70-80	0,143	125



### AW1-G

Extension adapter

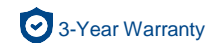


Product, type, model	Material	Width [mm]	Height [mm]	Product weight [kg]	Maximum user weight[kg]
AW1-G40 (SS)	Stainless steel	38	40	0,113	125
AW1-G55 (SS)	Stainless steel	38	55	0,143	125
AW1-G70 (SS)	Stainless steel	38	70	0,165	125



### AW2-G

Extension adapter



Product, type, model	Material	Width [mm]	Height [mm]	Product weight [kg]	Maximum user weight[kg]
AW2-G40 (SS)	Stainless steel	38	40	0,113	125
AW2-G55 (SS)	Stainless steel	38	55	0,155	125
AW2-G70 (SS)	Stainless steel	38	70	0,196	125



### AP-A

Extension adapter

Product, type, model	Material	Width [mm]	Height [mm]	Product weight [kg]	Maximum user weight[kg]
AP-A45 (SS)	Stainless steel	38	45	0,102	125
AP-A60 (SS)	Stainless steel	38	60	0,124	125
AP-A75 (SS)	Stainless steel	38	75	0,147	125
AP-A90 (SS)	Stainless steel	38	90	0,165	125
AP-A45 (AL)	Aluminum	44	45	0,064	125
AP-A60 (AL)	Aluminum	44	60	0,073	125
AP-A75 (AL)	Aluminum	44	75	0,082	125
AP-A90 (AL)	Aluminum	44	90	0,091	125



## DA-PC

Extension adapter

 3-Year Warranty

Product, type, model	Material	Width [mm]	Height [mm]	Product weight [kg]	Maximum user weight[kg]
DA-PC32 (SS)	Stainless steel	38	32	0,115	125
DA-PC45 (SS)	Stainless steel	38	45	0,147	125
DA-PC60 (SS)	Stainless steel	38	60	0,193	125
DA-PC75 (SS)	Stainless steel	38	75	0,233	125
DA-PC45 (AL)	Aluminum	44	45	0,113	125
DA-PC60 (AL)	Aluminum	44	60	0,133	125
DA-PC75 (AL)	Aluminum	44	75	0,154	125
DA-PC32 (TI)	Titanium	39	32	0,071	125
DA-PC45 (TI)	Titanium	39	45	0,093	125
DA-PC60 (TI)	Titanium	39	60	0,104	125
DA-PC75 (TI)	Titanium	39	75	0,118	125

## DA-CC

Extension adapter

 3-Year Warranty



Product, type, model	Material	Width [mm]	Height [mm]	Product weight [kg]	Maximum user weight[kg]
DA-CC32 (SS)	Stainless steel	38	32	0,142	125
DA-CC45 (SS)	Stainless steel	38	45	0,166	125
DA-CC60 (SS)	Stainless steel	38	60	0,200	125
DA-CC75 (SS)	Stainless steel	38	75	0,230	125
DA-CC32 (AL)	Aluminum	44	32	0,098	125
DA-CC45 (AL)	Aluminum	44	45	0,114	125
DA-CC60 (AL)	Aluminum	44	60	0,141	125
DA-CC75 (AL)	Aluminum	44	75	0,157	125
DA-CC32 (TI)	Titanium	39	32	0,092	125
DA-CC45 (TI)	Titanium	39	45	0,103	125
DA-CC60 (TI)	Titanium	39	60	0,114	125
DA-CC75 (TI)	Titanium	39	75	0,126	125

## DA-CC/P

Sliding extension adapter

 3-Year Warranty



Product, type, model	Material	Width [mm]	Height [mm]	Product weight [kg]	Maximum user weight[kg]
DA-CC/P45(AL)	Aluminum	44	45	0,150	125
DA-CC/P60 (AL)	Aluminum	44	60	0,192	125
DA-CC/P75 (AL)	Aluminum	44	75	0,233	125
DA-CC/P45 (TI)	Titanium	39	45	0,163	125
DA-CC/P60 (TI)	Titanium	39	60	0,202	125
DA-CC/P75 (TI)	Titanium	39	75	0,225	125



**ALMP**  
Connecting  
adapter

3-Year Warranty

Product, type, model	Material	Width [mm]	Height [mm]	Product weight [kg]	Maximum user weight[kg]
ALMP(SS)	Stainless steel	51	33	0,128	125



**ALMC**  
Connecting  
adapter

3-Year Warranty

Product, type, model	Material	Width [mm]	Height [mm]	Product weight [kg]	Maximum user weight[kg]
ALMC (SS)	Stainless steel	35	15	0,049	125



**ALMC-2**  
Connecting  
adapter

3-Year Warranty

Product, type, model	Material	Width [mm]	Height [mm]	Product weight [kg]	Maximum user weight[kg]
ALMC-2(TI)	Titanium	51	26	0,085	125



**AWPP-1**  
Sliding connecting adapter

3-Year Warranty

Product, type, model	Material	Width [mm]	Height [mm]	Product weight [kg]	Maximum user weight[kg]
AWPP-1 (SS)	Stainless steel	39	45	0,225	125
AWPP-1 (TI)	Titanium	39	45	0,131	125



**AWPC-1**  
Sliding connecting adapter

3-Year Warranty

Product, type, model	Material	Width [mm]	Height [mm]	Product weight [kg]	Maximum user weight[kg]
AWPC-1 (SS)	Stainless steel	43	45	0,253	125
AWPC-1 (TI)	Titanium	43	45	0,152	125



**ASZ-1**  
Quick-release adapter

3-Year Warranty

Product, type, model	Material	Width [mm]	Height [mm]	Product weight [kg]	Maximum user weight[kg]
ASZ-1 (SS)	Stainless steel	50	42	0,252	125



**ASZ-2**  
Quick-release adapter

3-Year Warranty

Product, type, model	Material	Width [mm]	Height [mm]	Product weight [kg]	Maximum user weight[kg]
ASZ-2 (TI)	Titanium	58	40	0,216	125

**STEELBO**



## QW-1, QP-1, QC-1

Caps for ASZ-2 adapter (TI)

3-Year Warranty

Product, type, model	Material	Width [mm]	Height [mm]	Product weight [kg]	Maximum user weight[kg]
QW-1 (TI)	Titanium	38	35	0,073	125
QP-1 (TI)	Titanium	38	40	0,160	125
QC-1 (TI)	Titanium	39	35	0,074	125



## APSC-1

Adjustable sliding adapter

3-Year Warranty

Product, type, model	Material	Width [mm]	Height [mm]	Product weight [kg]	Maximum user weight[kg]
APSC-1 (SS)	Stainless steel	42	65	0,283	125
APSC-1 (AL)	Aluminum	44	67	0,160	125
APSC-1 (TI)	Titanium	44	67	0,173	125



## APSP-1

Adjustable sliding adapter

3-Year Warranty

Product, type, model	Material	Width [mm]	Height [mm]	Product weight [kg]	Maximum user weight[kg]
APSP-1 (SS)	Stainless steel	42	65	0,280	125
APSP-1 (AL)	Aluminum	44	67	0,150	125
APSP-1 (TI)	Titanium	44	67	0,153	125



## AZ-P25

Clamp-type connecting adapter

3-Year Warranty

Product, type, model	Material	Width [mm]	Height [mm]	Product weight [kg]	Maximum user weight[kg]
AZ-P25 (SS)	Stainless steel	48	44	0,110	125
AZ-P25 (AL)	Aluminum	43	47	0,083	125
AZ-P25 (TI)	Titanium	44	49	0,067	125



## AZ-C25

Clamp-type connecting adapter

3-Year Warranty

Product, type, model	Material	Width [mm]	Height [mm]	Product weight [kg]	Maximum user weight[kg]
AZ-C25 (SS)	Stainless steel	48	44	0,130	125
AZ-C25 (AL)	Aluminum	43	47	0,083	125
AZ-C25 (TI)	Titanium	42	48	0,076	125



**AKZ-1**

Angled clamp-type connecting adapter

3-Year Warranty

Product, type, model	Material	Width [mm]	Height [mm]	Product weight [kg]	Maximum user weight[kg]
AKZ-1 (SS)	Stainless steel	42	52	0,127	125
AKZ-1 (TI)	Titanium	42	52	0,081	125

**AKZ-2**

Angled clamp-type connecting adapter

3-Year Warranty

Product, type, model	Material	Width [mm]	Height [mm]	Product weight [kg]	Maximum user weight[kg]
AKZ-2 (SS)	Stainless steel	44	60	0,188	125
AKZ-2 (TI)	Titanium	44	60	0,115	125

**AZP-1**

Adjustable sliding adapter

3-Year Warranty

Product, type, model	Material	Width [mm]	Height [mm]	Product weight [kg]	Maximum user weight[kg]
AZP-1 (AL)	Aluminum	50	50	0,075	125

**AZP-2**

Adjustable sliding adapter

3-Year Warranty

Product, type, model	Material	Width [mm]	Height [mm]	Product weight [kg]	Maximum user weight[kg]
AZP-2 (AL)	Aluminum	45	53	0,099	125

**09 FOOT ADAPTERS****AS-1**

Foot adapter

3-Year Warranty

Product, type, model	Material	Width [mm]	Height [mm]	Product weight [kg]	Maximum user weight[kg]
AS-1 (SS)	Steel	68	70	0,134	125
AS-1 (TI)	Titanium	65	70	0,093	125
AS-1 (AL)	Aluminum	65	70	0,108	125



**AO-V1**  
Rotational adapter

Waterproof

3-Year Warranty

Product, type, model	Material	Width [mm]	Height [mm]	Product weight [kg]	Maximum user weight[kg]
AO-V1(SS)	Stainless steel	63	44	0,256	125
AO-V1(TI)	Titanium	63	44	0,160	125



**D-TKR-02**  
Rotational adapter

2-Year Warranty

Product, type, model	Material	Rotation angle	Height [mm]	Product weight [kg]	Maximum user weight[kg]
D-TKR-02	Stainless steel, Aluminum Alloy	360°	36,2	0,180	125

11 LOCKS



**ZC-W1**  
Waterproof locking system

Waterproof

3-Year Warranty

Product, type, model	Material	Width [mm]	Height [mm]	Product weight [kg]	Maximum user weight[kg]
ZC-W1	Stainless steel	68	60	0,310	125



**ZC-W2**  
Waterproof locking system

Waterproof

3-Year Warranty

Product, type, model	Material	Width [mm]	Height [mm]	Product weight [kg]	Maximum user weight[kg]
ZC-W2	Stainless steel	68	60	0,310	125



**ZP-W1**  
Waterproof locking system

Waterproof

3-Year Warranty

Product, type, model	Material	Width [mm]	Height [mm]	Product weight [kg]	Maximum user weight[kg]
ZP-W1	Stainless steel	65	58	0,308	125



**ZP-W2**  
Waterproof locking system

Waterproof

3-Year Warranty

Product, type, model	Material	Width [mm]	Height [mm]	Product weight [kg]	Maximum user weight[kg]
ZP-W2	Stainless steel	65	58	0,300	125



**ZPL-W1**  
Waterproof locking system



Product, type, model	Material	Width [mm]	Height [mm]	Product weight [kg]	Maximum user weight[kg]
ZPL-W1	Stainless steel	86	58	0,230	125



**PIN**  
Prosthetic suspension pin



Product, type, model	Material	Width [mm]	Height [mm]	Product weight [kg]	Maximum user weight[kg]
PIN4.8	Stainless steel	14,9	48	0,018	125
PIN5.8	Stainless steel	14,9	58	0,020	125
PIN6.8	Stainless steel	14,9	68	0,022	125
PIN7.8	Stainless steel	14,9	78	0,025	125
PIN8.8	Stainless steel	14,9	88	0,027	125
PIN9.8	Stainless steel	14,9	98	0,031	125

**12 ORTHOPEDIC TEXTILES**



**RESIDUAL LIMB LEG COVER**

Cotton / terry cloth



**RESIDUAL LIMB THIGH COVER**

Cotton / terry cloth



**BANDAGE (SHOULDER JOINT ORTHOSIS FOR MOUNTING AND SECURING THE PROSTHESIS ORT-N-SR/ORT-N-SL)**

(Sizes S, M, L, XL, XXL)



1-Month Warranty

SIZE	S	M	L	XL	XXL
BICEP CIRCUMFERENCE, CM	28-32	32-36	36-40	40-44	44-48
MAXIMUM DEFLECTION NOT EXCEEDING, MM	±5	±5	±5	±5	±5



**BANDAGE (ELBOW JOINT ORTHOSIS FOR MOUNTING AND SECURING THE FOREARM PROSTHESIS ORT-N-ER/ORT-N-EL)**

(Sizes S, M, L, XL)



1-Month Warranty

SIZE	S	M	L	XL
BICEP CIRCUMFERENCE, CM	23-24	24-25	26-27	28-29
BANDAGE HEIGHT, CM	22	22	22	22
MAXIMUM DEFLECTION NOT EXCEEDING, MM	±5	±5	±5	±5



**HIP BANDAGE (BELT) FOR MOUNTING AND SECURING THE PROSTHESIS ORT-N-U1**

(Sizes S, M, L, XL, XXL, XXXL)



1-Month Warranty

SIZE	S-M-L	XL-XXL-XXXL
WAIST CIRCUMFERENCE, CM	70-95	95-130
HIP CIRCUMFERENCE B, CM	34-44	44-54
MAXIMUM DEFLECTION NOT EXCEEDING, MM	±5	±5



**COMFORT**  
Knee orthosis



1-Month Warranty

Anthracite		Beige / Leather	
Reference number	Size	Reference number	Size
12 6-C S-1 A-330-S	S	12 6-C S-1 B-330-S	S
12 6-C S-1 A-330-M	M	12 6-C S-1 B-330-M	M
12 6-C S-1 A-330-L	L	12 6-C S-1 B-330-L	L



# Contact us

☎ +48690524907

✉ [info@steelbo.eu](mailto:info@steelbo.eu) / [sprzedaz@steelbo.eu](mailto:sprzedaz@steelbo.eu)

🌐 <https://steelbo.eu>

📍 Poland, Wałbrzych, Ludowa Street 61 F. 58-304



STEELBO